

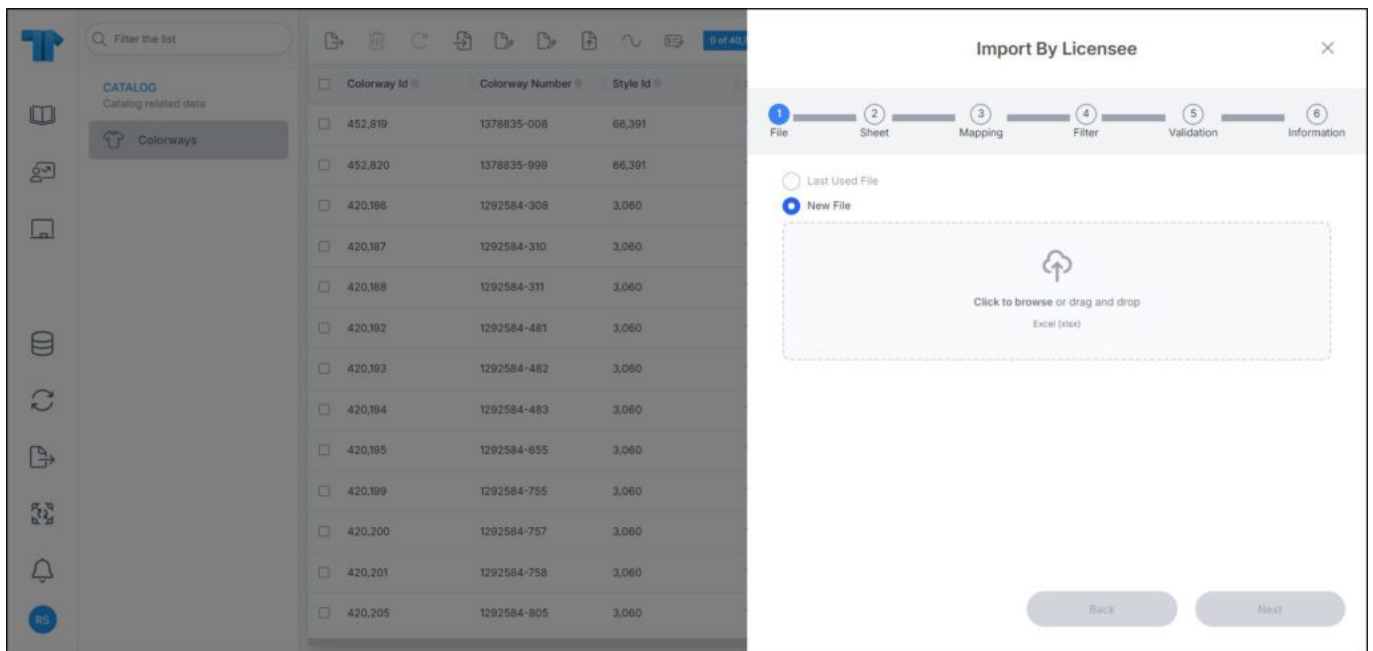
Import by licensee

If you have the required privileges, you can import a list of licensee styles and colorways. These styles and colorways do not follow the same numbers given by T1.

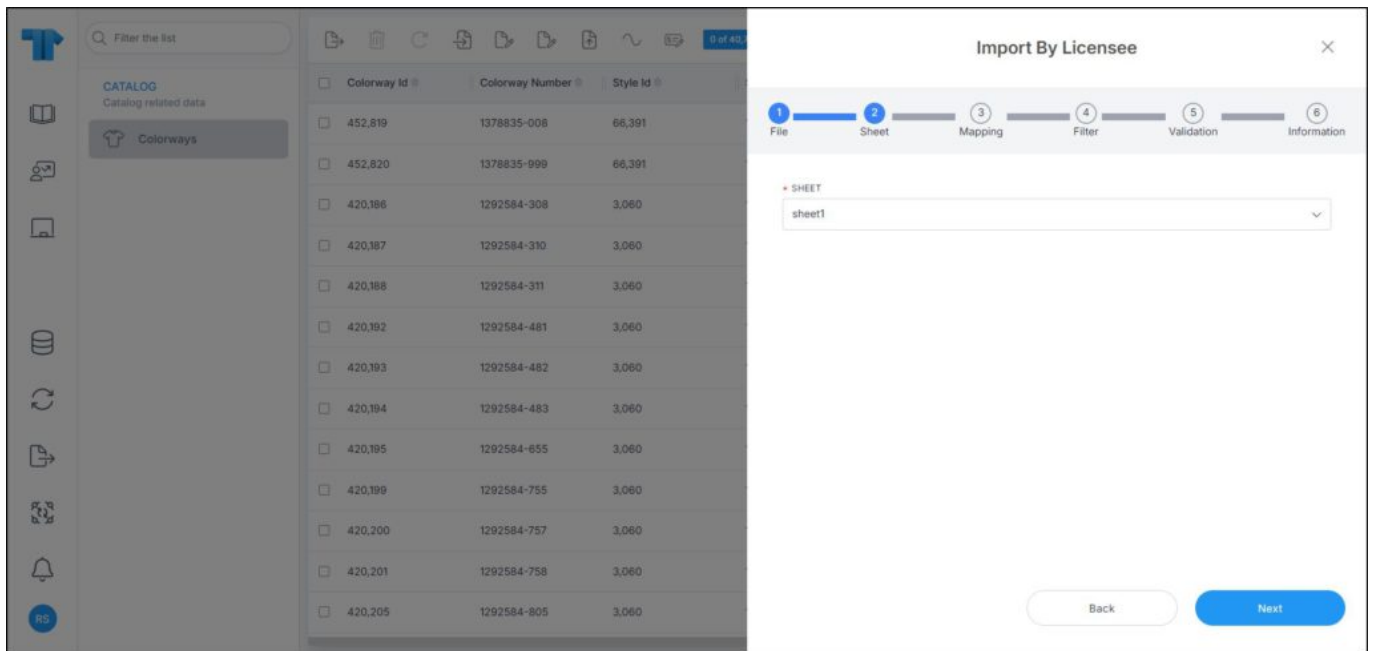
This option is only available for master catalogs. An attribute should be defined at the catalog level based on which colorways are either created or updated if they already exist.

To import a file with licensee styles and colorways, follow these steps:

1. Click the **Import by licensee** button, the following window appears:

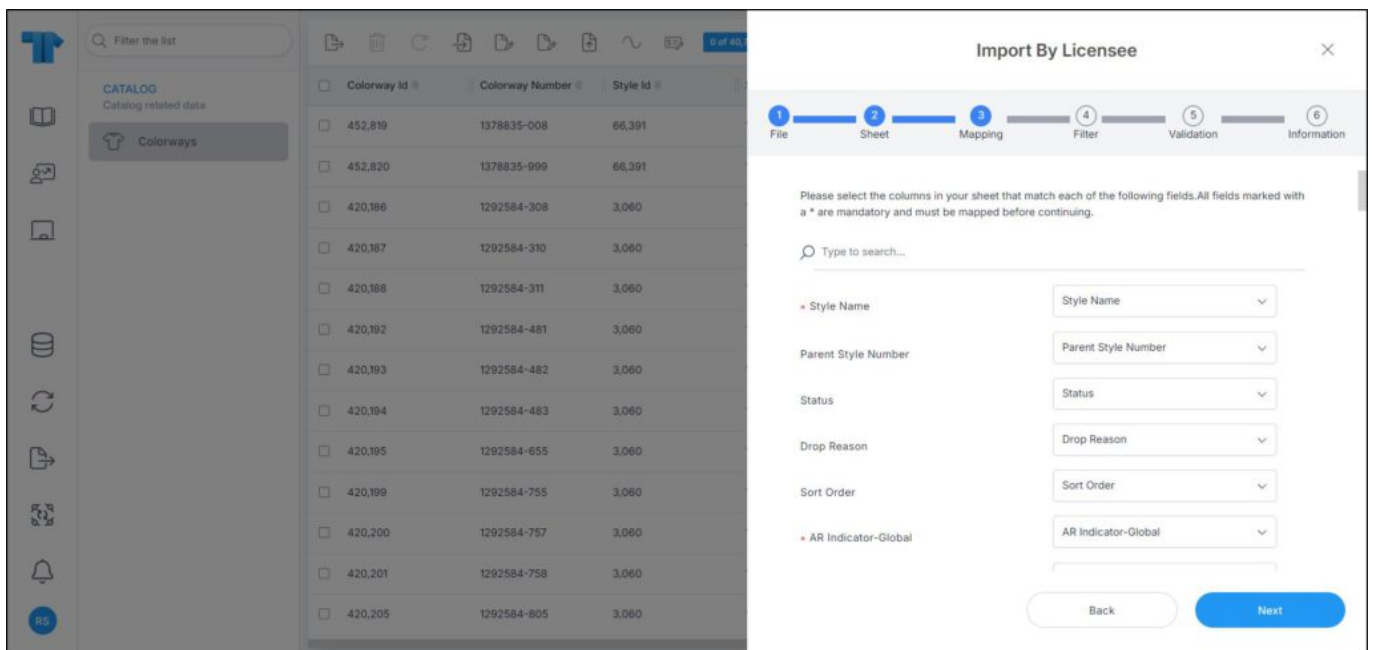


2. Click **Select** to browse for the file you want to import, or drag and drop the file,
3. Select the file then click **Open**, the name of the file you selected appears in its field, click **Next**, the following window appears:



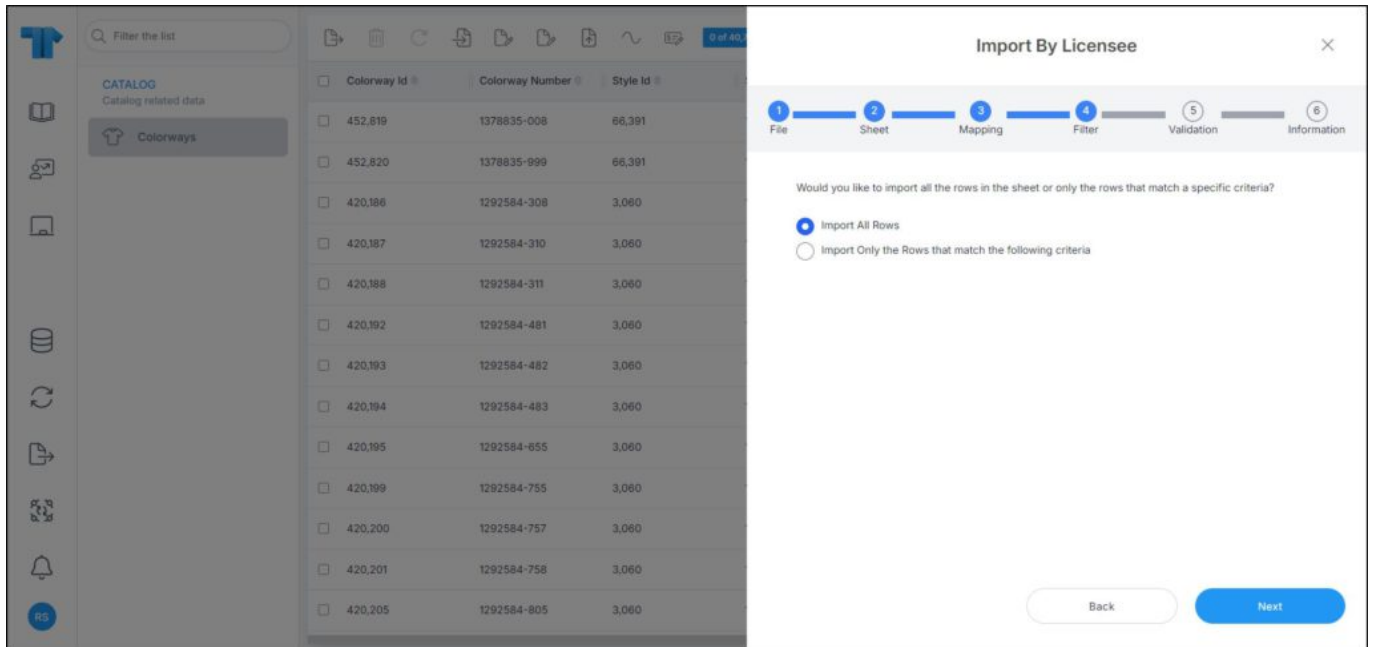
You can click **Back** to return to the previous window.

4. Select the sheet you want from the dropdown list in case your Excel file contains more than one sheet,
5. Click **Next**, the following window appears:

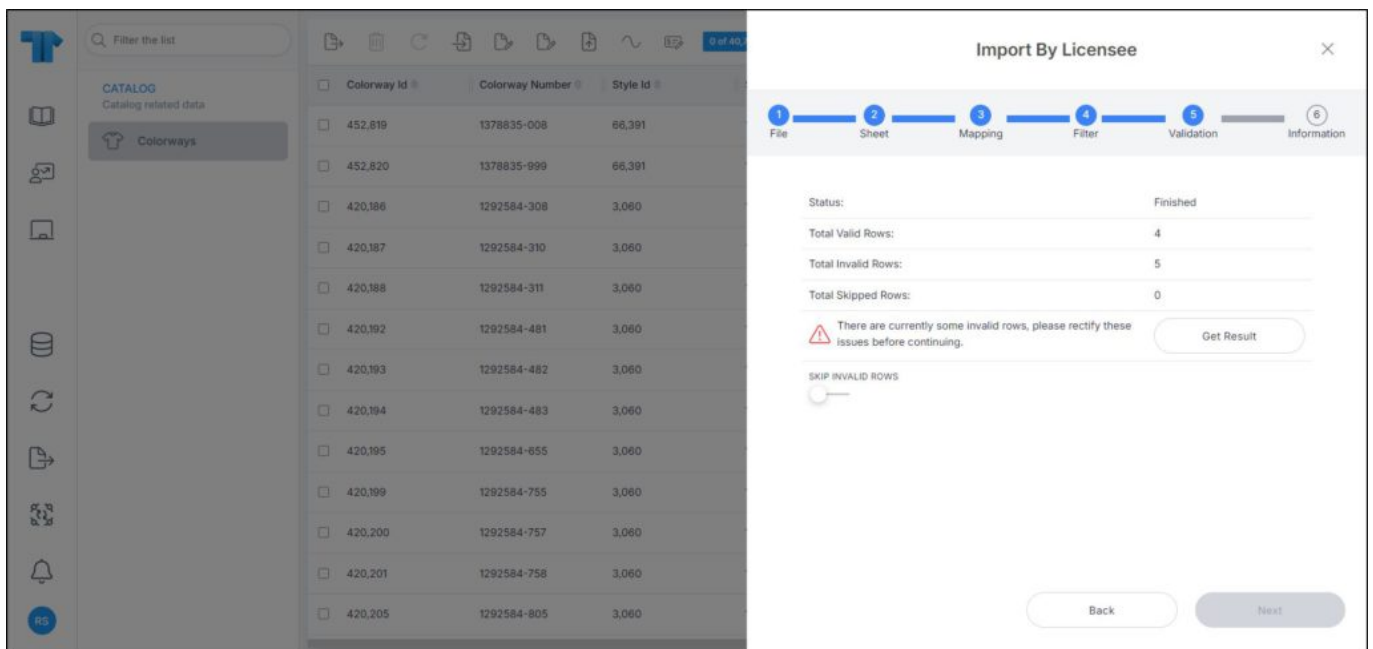


6. Select the column of the sheet that matches each field, you can search for the field you

want using the search field, then click **Next**, the following window appears:

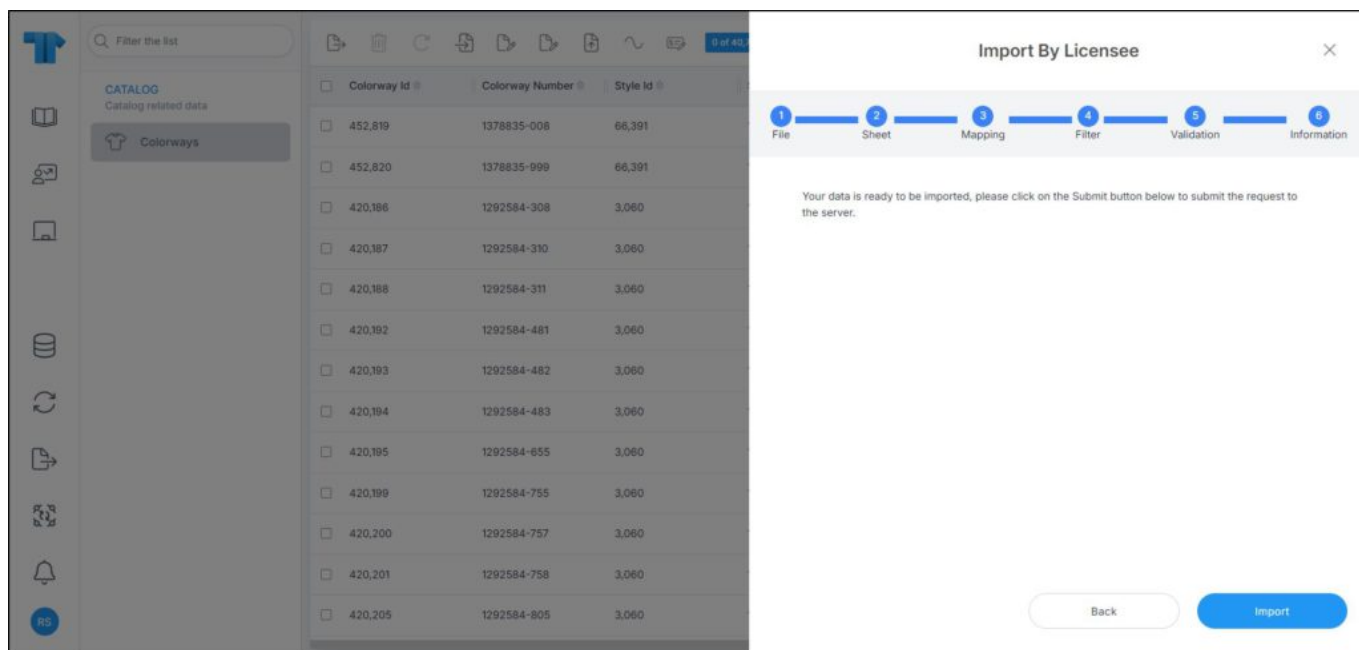


7. Click the radio button next to the import method, either all rows or rows that match certain criteria, a validation window appears informing you if records are valid or not, if not, you need to fix the sheet then import the file again,
8. Click **Next**, the following window appears:



The above example shows that some records are invalid. You can click the **Get results** button to download the results file and check the error then import the file again, or click the slider next to Skip invalid rows. When the slider is on, the **Next** button is activated.

9. Click **Next**, the following window appears:



10. Click **Import**, the progress is displayed and can be tracked through the Notifications module,

11. Refresh the page to display the updated records.