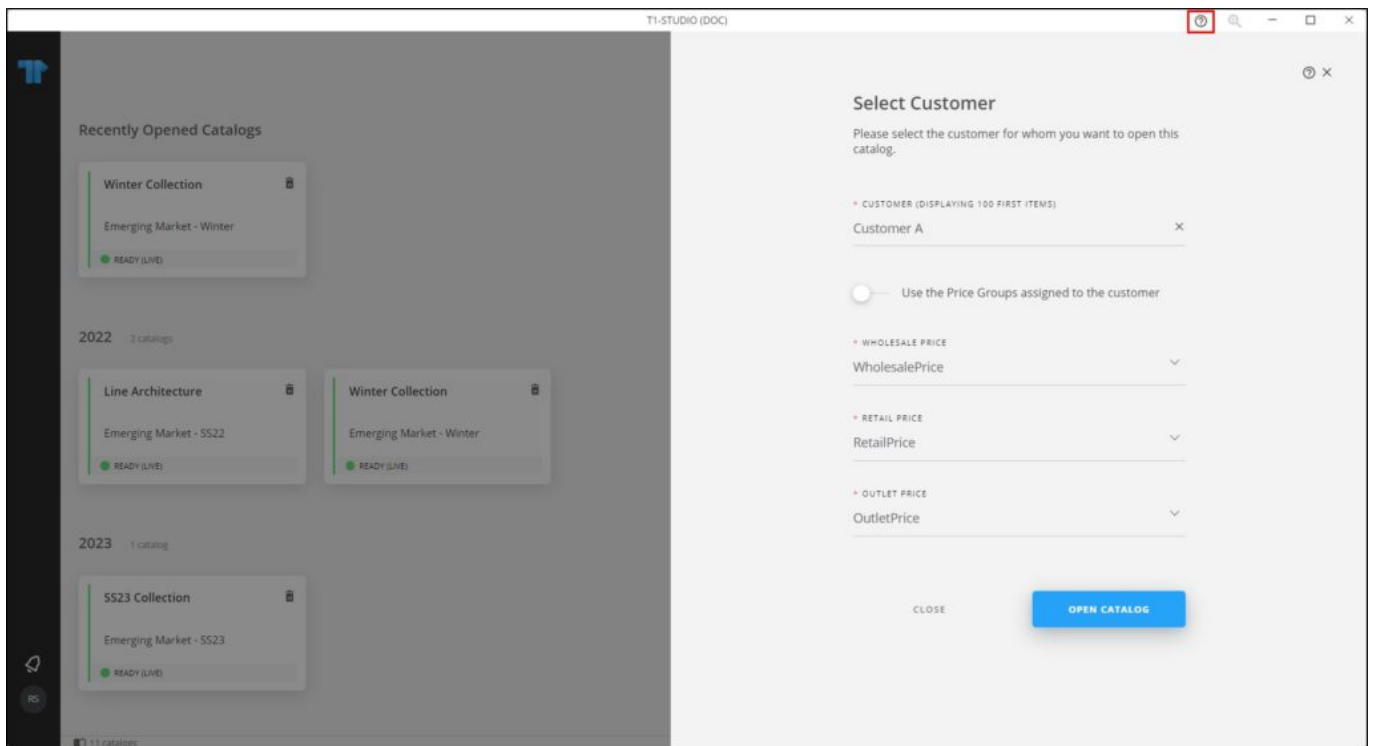


# Help portal

Help icon is available throughout the application to provide you with details on how to perform certain actions.

The icon will be available in the main window, in addition to customer selection window and other functional windows.

This section provides guidance on how to use the Help portal. When you open a catalog, the following window appears:



When you click the **Help** icon, you are redirected to the user guide section that provides details on how to perform the actions needed in this window as shown below:

Home > [Trasix knowledge base](#) > [T1 Studio](#) > [Catalog](#) > [Open catalog](#)

### Contents

- Introduction >
- T1 Studio Installation >
- Log in to T1 Studio >
- Dashboard >
- Catalog >
  - Open catalog
  - Browse catalog
  - Assign resources
  - Filter articles
  - Saved views
  - Saved view comments
  - Update via drag and drop
  - Catalog buckets
  - Article summary
  - Article details
  - Edit articles
  - Forecasts

## Open catalog

313 | September 29, 2021

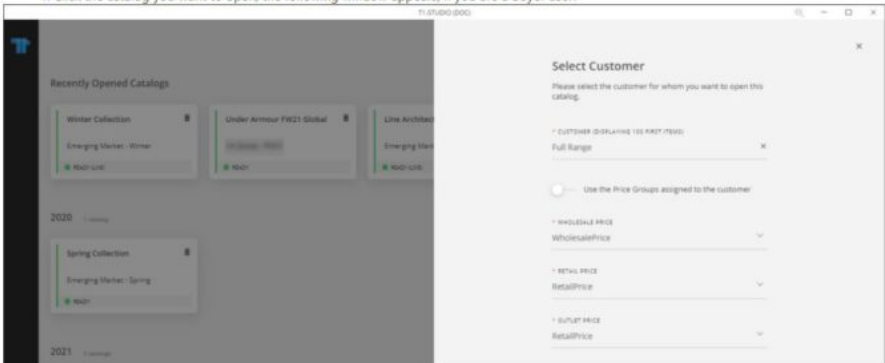
### Open catalog

**Notes:**

- You can only open catalogs for which the status is "Ready" or "Assets Available".
- If the selected catalog is a Line Architecture, you will not need to select the customer and prices and the catalog opens directly.

To open a catalog, follow these steps:

- Click the catalog you want to open, the following window appears, if you are a buyer user:



The screenshot shows two overlapping windows from the T1 Studio application. The background window, titled 'Recently Opened Catalogs', displays a list of catalogs organized by year. Under '2020', there are three items: 'Winter Collection', 'Under Armour FW21 Global', and 'Line Architecture'. Under '2021', there is one item: 'Spring Collection'. Each item shows 'Emerging Market' and 'Add Link'. The foreground window, titled 'Select Customer', prompts the user to 'Please select the customer for whom you want to open this catalog.' It features a search field with 'Full Range' entered, a radio button for 'Use the Price Groups assigned to the customer', and three dropdown menus for 'WHOLESALE PRICE' (set to WholesalePrice), 'RETAIL PRICE' (set to RetailPrice), and 'BUYER PRICE' (set to RetailPrice).

You can use the Help portal on different windows throughout the application as shown in the above example.